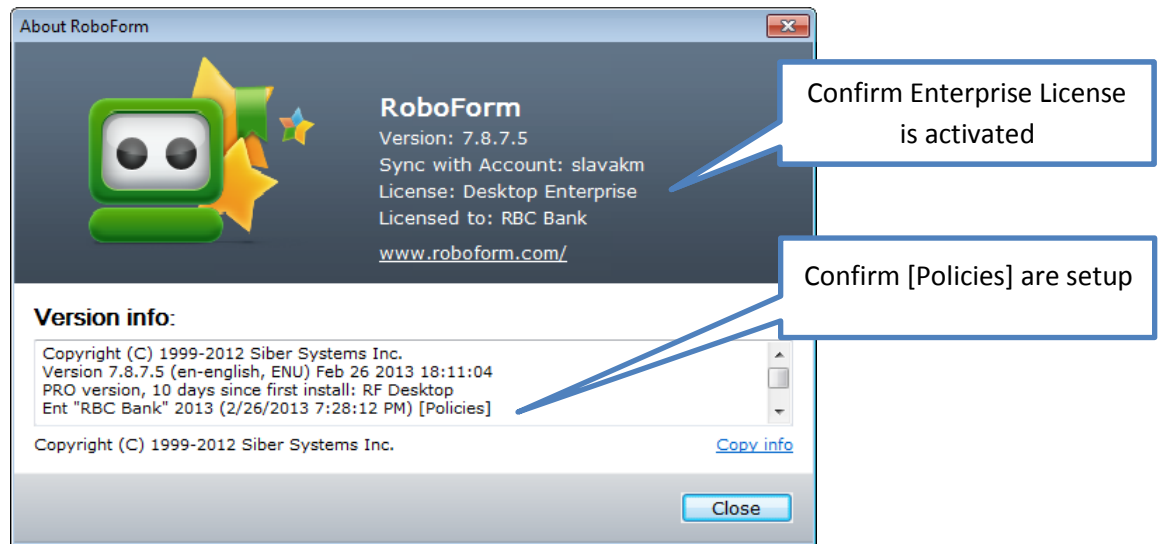
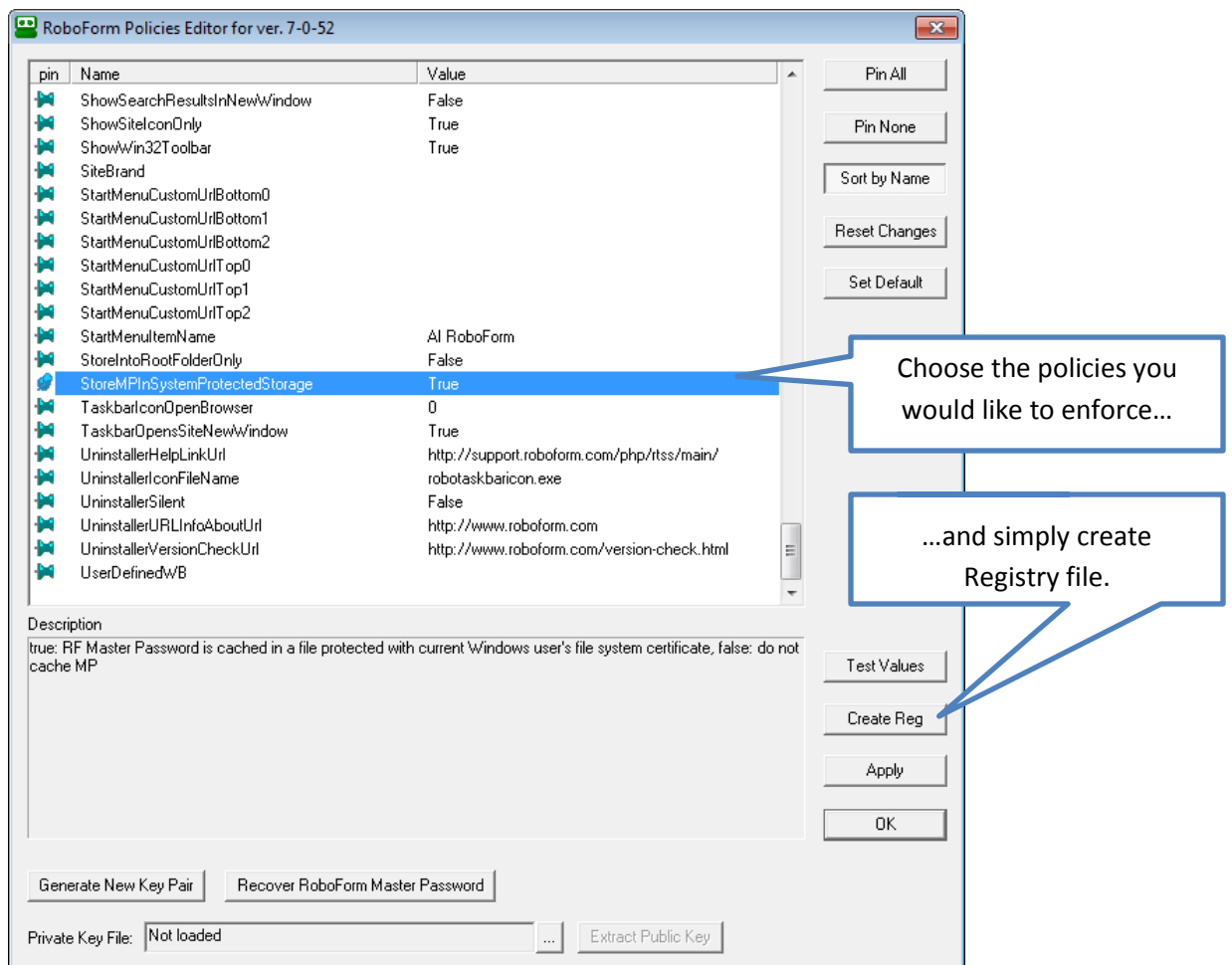


## Establishing Policies

To set up your Users, simply install RoboForm Enterprise and activate with an Enterprise License. You can confirm this by navigating to RoboForm's "About" screen.

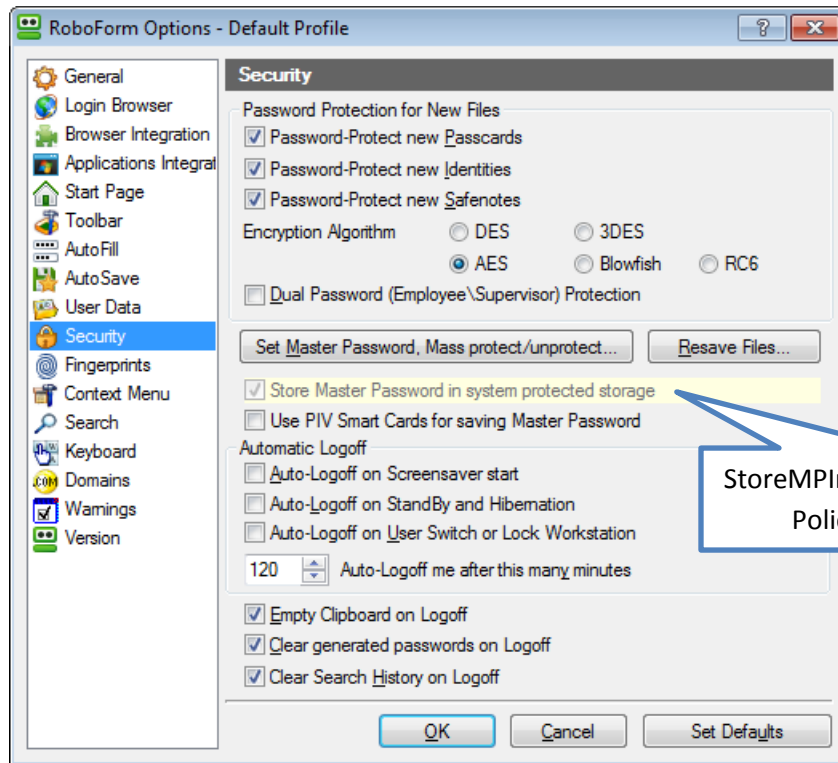


If on a domain, the Group Policies should automatically be pushed down to the User. If not on a domain, you will need to create and run .BAT file to put the correct registry entries on the user's PC. To create this file, please use **RoboForm Policy Editor**, located in your SEGConsole's Deployment folder.



## Changing Master Password

To change Master Password, please navigate to RoboForm's **Options** menu and select **Security**. Click "Set Master Password" button and go through the steps (This will also create an .ENP file for Master Password Recovery).



If applicable, you may need to run the Deployment script (.VBS file can be found in the Deployment folder). Then in RoboForm's **Sync Settings**, point to the correct account (companyID\_UserName).

